

CONTROL MODULE

DESCRIPTION

The Fike Control Module (P/N 55-042 & 55-047) is used to switch an external power supply to notification appliances or release solenoids used for sprinkler operation, or to activate Fike's Masterbox Interface module (P/N 10-2413), which is used on a Local Energy Type Auxiliary Fire Alarm System. The module is capable of Class A or Class B wiring. The device will monitor the wiring (while external power is not switched to the auxiliary devices) to the connected device for open and short circuits. The module will monitor the external power input for loss of power (DC voltage supplies only). The isolator version of the module (P/N 55-047) provides complete short circuit isolation for installations requiring NFPA Style 7 wiring.



The module is compatible with Fike's CyberCat and Cheetah Xi intelligent control panels. Its operating parameters are configured using the panel's programming software and are stored within non-volatile RAM in the module. This on-board intelligence allows each module to communicate its status directly to other devices connected to the panel. This peer-to-peer digital protocol results in less information that needs to be sent between the module and the host control panel, resulting in faster, more reliable communication.

SPECIFICATIONS

Normal Operating Voltage:	15 to 30 VDC
Standby Current:	630 μ A max. average (continuous broadcasts)
Alarm Current:	2 mA (red LED on)
Maximum NAC Circuit Wiring Resistance:	100 ohms
Power Supply Monitor:	Normal Range: 9 to 80 VDC Trouble Range: 0 to 2 VDC
Temperature Range:	32°F to 120°F (0°C to 49°C)
Humidity:	10 to 93% RH Noncondensing
Dimensions:	4.17"H x 4.26"W x 1.22"D (106 mm H x 108 mm W x 31 mm D)
Accessories:	39 k Ω End of Line Resistor P/N 10-2625 (included) Wall cover plate (included) P/N 20-1072 Surface Mount Electrical Box P/N 20-1071 Control Module Barrier P/N 10-2360 Solenoid Series Impedance
Mounting:	Mounts to a 4" x 4" x 2 1/8" Junction Box for flush mounting or on a surface mount box (P/N 10-2072) for surface mounting

Current Rating	Maximum Voltage	Load Description	Application
3A	30 VDC	Resistive	Non-Coded
2A	30 VDC	Resistive	Coded
1A	30 VDC	Inductive (L/R=2 ms)	Coded
0.5A	30 VDC	Inductive (L/R=5 ms)	Coded
0.9A	70.7 VAC	Resistive	Non-Coded
0.7A	70.7 VAC	Inductive (PF=.035)	Non-Coded

Form No. P.1.94.01-3

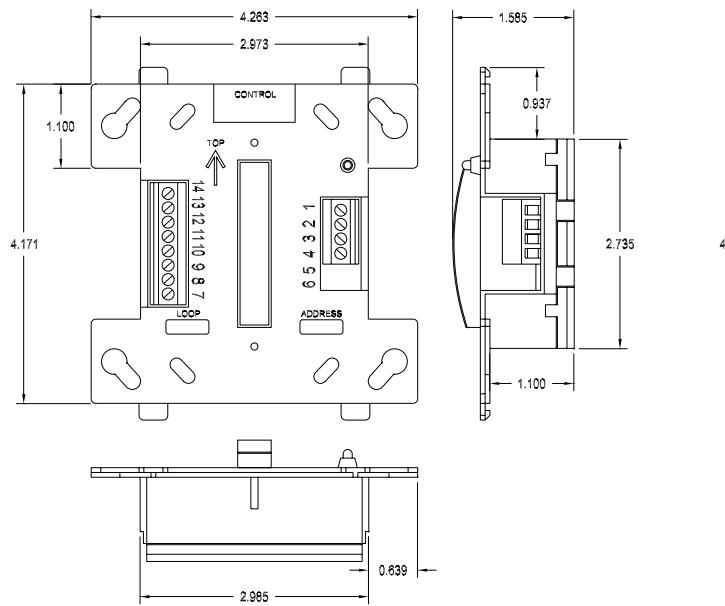
ORDERING INFORMATION

Fike P/N	Description
55-042	Supervised Control Module - Non-isolator
55-047	Supervised Control Module - Isolator
Accessories	
20-1071	Control Module Barrier
20-1072	Surface Mount Box
55-051	Configuration IR Tool

APPROVALS

- UL - S2203
- FM - 3021590 (non-isolator) 3023166 (isolator)
- MEA - 8-05-E
- CSFM - 7165-0900:137

MODULE DIMENSIONS



TERMINAL DEFINITIONS

T1	(+) SLC in/out	T8	(+) 24 VDC External Power in/out
T2	(-) SLC in/out	T9	(-) 24 VDC External Power in/out
T3	(+) SLC in/out	T10	(+) 24 VDC External Power in/out
T4	(-) SLC in/out	T11	NAC (+) Class A/B
T5	No Connection	T12	NAC (-) Class A/B
T6	No Connection	T13	NAC (-) Class A
T7	(-) 24 VDC External Power in/out	T14	NAC (+) Class A

